

[www.zc-rubber.com](http://www.zc-rubber.com)



[www.westlaketyre.com/eu](http://www.westlaketyre.com/eu)



Facebook - Westlake



ZHONGCE RUBBER GROUP CO., LTD.

# WEST LAKE

PREMIUM TYRES



EU Version



- A Company established in Year 1958
- No. 1 Tyre Manufacturer in China
- No. 9 of Top 75 Global Tyre Manufacturers in Year 2019
- Sale revenue reached USD3.996 billion in Year 2018

Zhongce Rubber Group Co., Ltd. (ZC-RUBBER) takes great pride in producing tyres that rate among the best in the world. Our corporate philosophy is all about collaboration with our suppliers, with over 10,000s of companies who sell our products around the world, and with our millions of end customers who trust our tyres every single day.

Our engineers are working together closely with our international Research and Development (R&D) team combined of Japanese and Korean experts. We keep on investing millions of US dollars in establishing various production and testing facilities. Meanwhile the quality control system approved by global tyre manufacturers and

international vehicle manufacturers will guarantee the safety and quality of ZC-Rubber tyres.

Today ZC-Rubber is expanding from a Chinese oriented company to a global tyre manufacturer. The subsidiaries located in Southeast Asia, North America, South America and Europe are serving customers without any difference of time and language. The newly established Thailand plant will produce suitable products for local and nearby markets. Safe and value will be the key supplied by ZC-Rubber, who will craft a better future together with partners and friends all over the world.

<b>Manufacturing Bases</b>				
<b>Advanced Production Facility</b>				
<b>Strict Quality Inspection</b>				
<b>R&amp;D Center</b>				





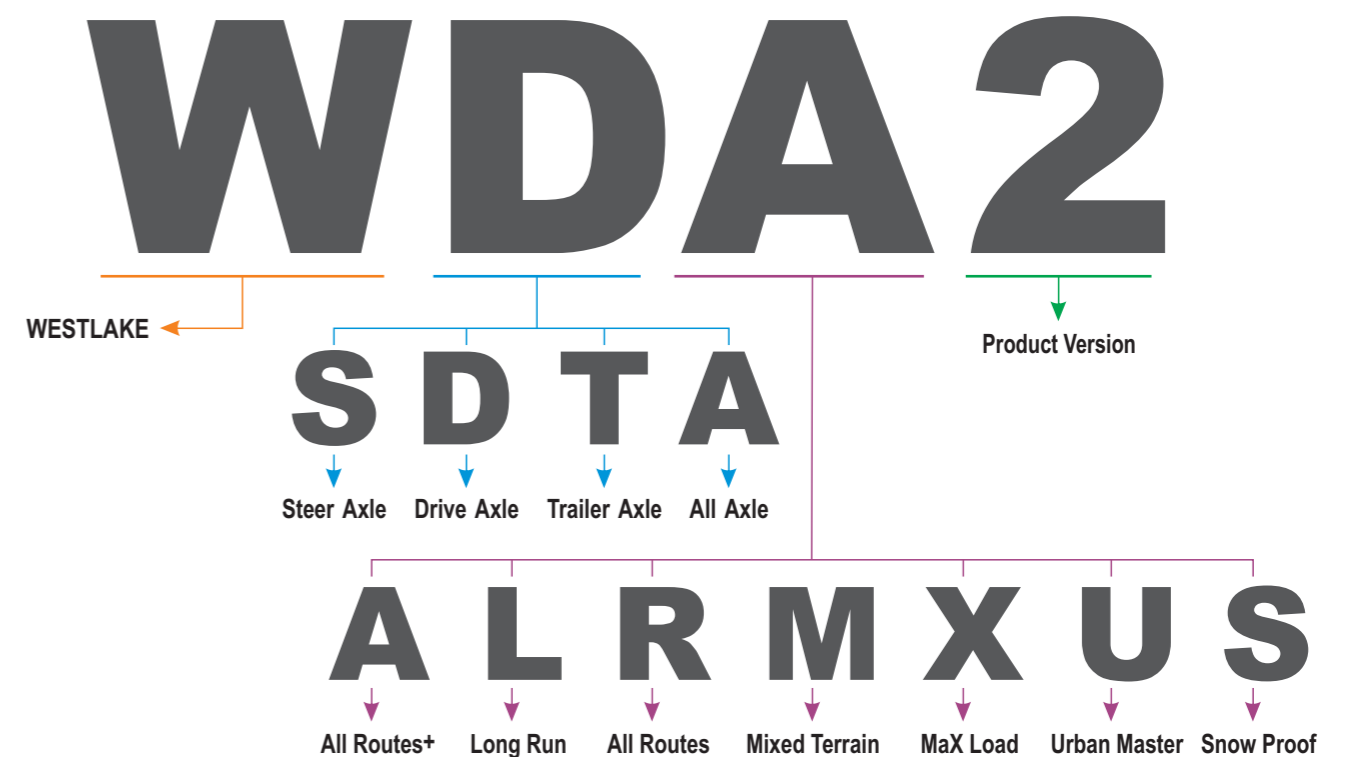
## WESTLAKE TYRE FEATURES

- Special Tread design for each truck application
- Durability of tyres
- Strong tyre casing for retread
- Cool running tyres helping to save fuel
- Eco-friendly product and REACH conformity
- ISO 9001 certified production

## Application and Key Feature Legend

<b>A</b>	All Routes+ (Long Haul) (Regional)		WSA2 <sup>LT</sup> / WSA2 / WDA2 <sup>LT</sup> / WDA2	P 09-13
<b>L</b>	Long Run (Long Haul)		WSL1 / WDL1 / WTL1	P 14-17
<b>R</b>	All Routes (Regional)		WSR <sup>1</sup> / WSR1 / WDR <sup>1</sup> / WDR1 / WTR1	P 18-23
<b>M</b>	Mixed Terrain (Mixed Service)		WSM2 / WDM2 / WDM1 / WTM1	P 24-28
<b>X</b>	MaX Load (Low Loader)		WTX1	P 29-30
<b>U</b>	Urban Master (Urban)		WAU1	P 31-32
<b>S</b>	Snow Proof (Winter)		WSS1 / WDS1 / WTS1	P 33-36

## How to Read the Profile Name

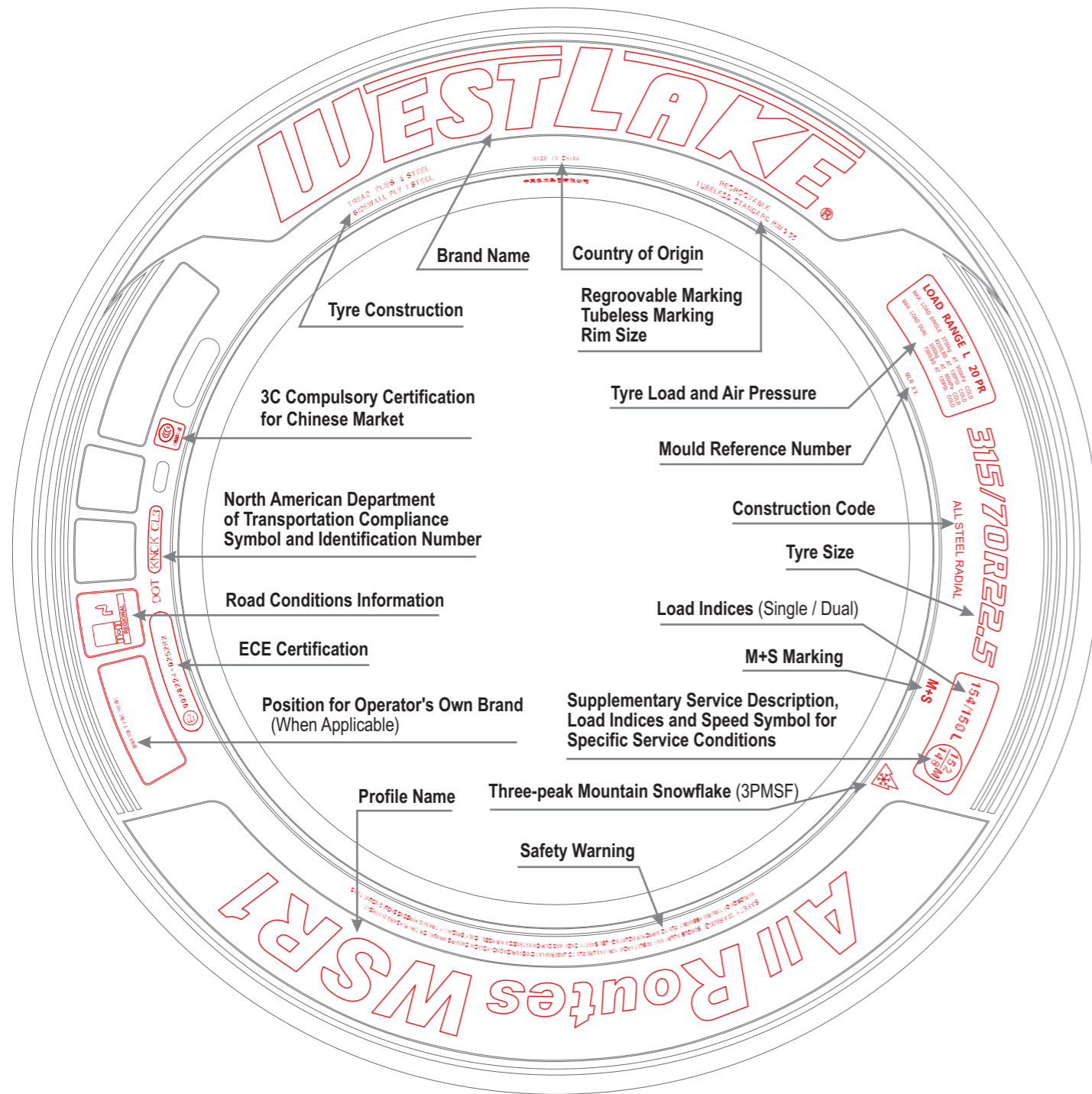


# TYRE SIDEWALL INSTRUCTION

A series of internationally used numbers and codes exist for the identification of tyre structures, dimensions and main applications as well as the producer information.

This group of codes and numbers is collectively known as the "tyre markings" and permits a precise identification of the tyre.

The picture below gives an example of the tyre markings as they appear on a tyre.



# TECHNOLOGIES FOR TYRES WITH THE VALUE

**WESTLAKE** is constantly striving to create the best solutions for each application. **WESTLAKE's** commitment to you and to the environment ensures cost-effective quality tyres.

## WESTLAKE's Concept

WESTLAKE provides tyres with longer mileage, greater retreadability, more durability and less fuel consumption, in one word, more value, to fleets in Europe.

Given the extreme demands of today's transport industry, Westlake invests on continuous innovation in tyre technology which is essential and helps the fleets who seek tyre value and cost saving.

## Tyre Construction

### Tread

Compounds used in the tread depend on the tyre's specific application needs. WESTLAKE has various compounding strategies to minimise tyre treadwear, and maximise traction, fuel efficiency, and resistance to fatigue, chipping and scaling.

### Belt Edge Cushion

WESTLAKE tyres feature a belt edge cushion to help to enhance the structure durability, and therefore extend the tyre life.

### Inner Liner

WESTLAKE's inner liner is specially designed to maintain the air pressure of each tyre to avoid any possible tyre damage. The special inner liner compound ensures a significantly longer casing life.

### Bead Filler

Two or more different compounds are used in WESTLAKE's bead filler to stiffen the bead for steering response and to control the flexibility of other parts of the tyre.

### Belts and Casing

Thin, highly adhesive assembly compounds are used in WESTLAKE's tyre casing and belts to improve the steel cords strength.

### Undertread

WESTLAKE's undertread compounds generate less heat in order to prevent tread separation.

### Sidewall

WESTLAKE applies special sidewall compounds high flexibility, excellent durability and high resistance to fatigue and weather cracking.

### Rim Cushion

WESTLAKE's rim cushion compound is highly resistant to the heat brought by the heavy load or transmitted by the rim so as to extend the tyre life.



# WESTLAKE: YOUR SMART INVESTMENT

Recommendations to ensure the top performance of your WESTLAKE tyres.

## Inflation Pressure

Truck tyres for commercial vehicles must be properly inflated to a pressure based on the load, speed and conditions of use for maximum performance in all aspects such as even wear (long mileage), traction and handling stability (riding comfort) in addition to safety issues\*.

\*Check WESTLAKE's recommendations of PRODUCT TECHNICAL DATA at page 23-24 of this catalogue.

<b>CORRECT INFLATION</b>	<b>UNDERINFLATION</b>	<b>OVERINFLATION</b>
maintains even road contact for maximised performance.	causes abnormal tyre deflection, which builds up excessive heat, and risk of failure. It also causes excessive wear on the shoulder.	increases the risk of impact breaks and other road hazard damage. It also causes excessive wear in the centre.

Tyre pressures should be checked on cold tyres at least every two weeks, using a calibrated pressure gauge. Tyres with lower profiles must be checked strictly due to their less visible sidewall deflection.

WESTLAKE provides inflation pressure stickers (shown as the right) with several different values for certain applications to help customers maintain proper pressures. Please contact your WESTLAKE distributor for details.

**850/8.50/124**  
kPA      Bar      PSI

**WEST LAKE TRUCK & BUS TYRES**

## Retreading

Every new WESTLAKE truck tyre product is designed and constructed for better retreadability. Please consult your WESTLAKE distributor for details.

## Regrooving

Regrooving must be undertaken when only between 2 to 3 mm of the original tread pattern remains, in accordance with WESTLAKE's recommendations in this catalogue.

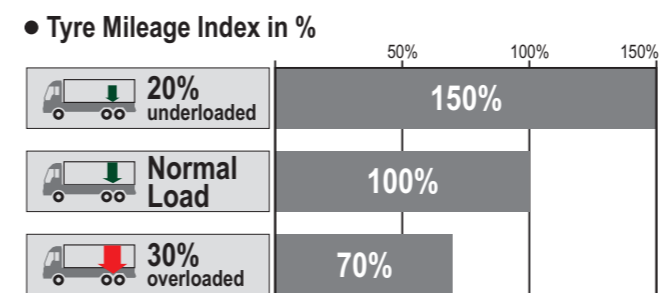
## Tyre Wear Factors

### FUEL ECONOMY & THE ENVIRONMENT

These tables indicate factors of tyre wear. If all factors are taken into consideration and applied correctly according to your vehicle and situation, it will result in best fuel efficiency and help for the protection of our environment.

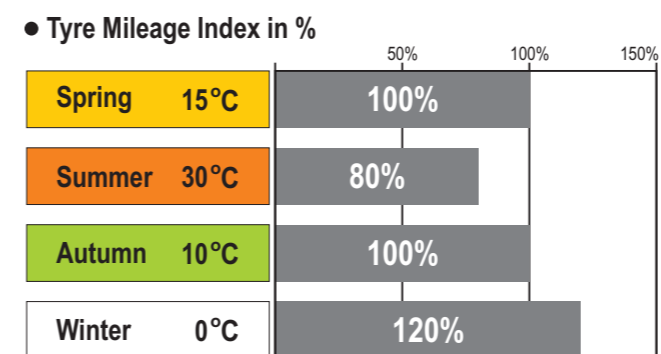
Please contact your WESTLAKE distributor for more details.

### CARRYING LOAD



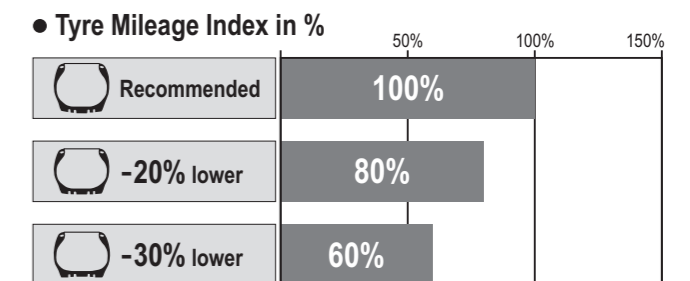
Tyre wear depends upon the payload carried. WESTLAKE recommends carrying the payload on correct axles and carry heavy load on drive axle position if applicable.

### SEASONAL / AMBIENT TEMPERATURES



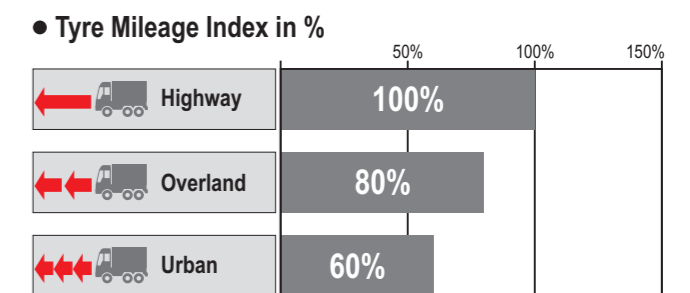
Tyre wear is temperature dependent. WESTLAKE recommends carrying out a tyre service before the summer season.

### INFLATION PRESSURE



The proper inflation pressure is essential for the tyre performance for every application. WESTLAKE recommends frequent inflation checking. If necessary increase tyre inflation as per the recommendation of load and inflation PRODUCT TECHNICAL DATA or inflation stickers.

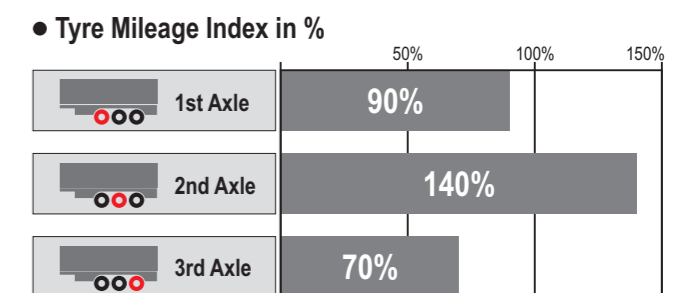
### STOP AND ACCELERATION OPERATION



Rapid or frequent stop and acceleration traffic results in additional tread wear to tyres and reduce the tyre life.

WESTLAKE recommends mild steering & braking especially while turning or curving in daily use. Furthermore new products with special tread and enhanced sidewall will be developed for city operation with more frequent "stop and go" situation.

### TRAILER AXLES



Trailer tyre wear is dependent on the side force of the axles of trailers. WESTLAKE recommends proper tyre rotation when utilizing retreaded tyres.



- Hybrid concept of long haul and regional application
- Excellent fuel efficiency with maximum mileage
- Improved road grip prepare for various road surface

Highway

Country Road

City

Construction Site



# WSA2<sup>LT</sup>



All Routes<sup>+</sup> / Steer Axle

2nd generation steer tyre engineered with innovative WESTLAKE's latest technology for both long haul and regional operations with rims of 17.5" and 19.5".

- Wide tread width offers high tread rubber volume to guarantee higher long mileage.
- Four wavy main grooves provide excellent handling and drainage performance on long haul and regional applications.
- Multi-lateral kerfs provide better traction and even wear.

SIZE	SERVICE INDEX				NOISE (dB)
215/75R17.5	128/126M	D	D	2	72
225/75R17.5	129/127M	D	D	2	72
235/75R17.5	132/130M	D	D	2	72
265/70R19.5	140/138M	D	C	2	74





# WSA2

M+S



All Routes+ / Steer Axle

2nd generation steer tyre engineered with innovative WESTLAKE's latest technology for both long haul and regional operations.

- Wide tread width offers high tread rubber volume to guarantee higher long mileage.
- Four wavy main grooves provide excellent handling and drainage performance on long haul and regional applications.
- Multi-lateral kerfs provide better traction and even wear.

SIZE	SERVICE INDEX				NOISE (dB)
385/55R22.5	160K(158L)	C	B	2	73
315/70R22.5	156/150L	D	B	2	73
295/80R22.5	154/149L	D	C	2	74
315/80R22.5	156/153L(154/151M)	D	B	2	73



# WDA2<sup>LT</sup>

M+S



All Routes+ / Drive Axle

2nd generation drive tyre engineered with innovative WESTLAKE's latest technology for both long haul and regional operations with rims of 17.5" and 19.5".

- Combination tread block design improves grip ability and driving power.
- Multi 3D sipes offer low rolling resistance and outstanding traction.
- Wide tread width guarantees riding stability and longer mileage.

SIZE	SERVICE INDEX				NOISE (dB)
215/75R17.5	128/126M	D	D	2	72
225/75R17.5	129/127M	D	D	2	72
235/75R17.5	143/141J(144/144F)	D	D	2	72
265/70R19.5	140/138M	E	C	2	74





# WDA2

M+S



All Routes+ / Drive Axle

2nd generation drive tyre engineered with innovative WESTLAKE's latest technology for both long haul and regional operations.

- Combination tread block design improve grip ability and driving power.
- Multi 3D sipes offer low rolling resistance and outstanding traction.
- Wide tread width guarantees riding stability and longer mileage.

SIZE	SERVICE INDEX				NOISE (dB)
315/70R22.5	156/150L	D	C	2	74
295/80R22.5	154/149K	E	C	2	74
315/80R22.5	156/153L(154/151M)	D	C	2	74



- Long distance journey with constant speed and less braking and accelerating
- Excellent paved road condition with less curves
- Less fuel consumption and comfortable ride
- High mileage performance



Highway

Country Road

City

Construction Site





# WSL1

M+S



## Long Run / Steer Axle

New steer tyre designed with innovative WESTLAKE latest technology for long haul application.

- Computer-aided design tyre structure provides excellent footprint profile and ensures superior comfort.
- Special tread compound guarantees low rolling resistance help to reduce fuel consumption.
- Straight tread pattern designed to minimize uneven wear.

SIZE	SERVICE INDEX				NOISE (dB)
355/50R22.5	156K(154L)	D	C	2	73
385/55R22.5	158L(160K)	D	C	2	73
295/60R22.5	150/147K(149/146L)	D	C	2	73
315/60R22.5	154/150L	D	C	2	73



# WDL1

M+S



## Long Run / Drive Axle

New drive tyre designed with innovative WESTLAKE latest technology for long haul application.

- Deep tread depth and wider tread with robust tread block produce outstanding traction on both dry and wet road surfaces.
- Special shoulder design with low-heating compound ensures less tread wear longer tyre life.
- Tread pattern designed to enhance mileage, traction and driving stability.

SIZE	SERVICE INDEX				NOISE (dB)
295/55R22.5	147/145K	D	C	2	74
295/60R22.5	150/147K(149/146L)	D	C	2	74
315/60R22.5	154/150K(152/148L)	D	C	2	74





# WTL1

M+S



## Long Run / Trailer Axle

New wide base trailer tyre with WESTLAKE's latest technology for long haul application.

- 5-Rib tread design enhances longer mileage.
- Computer-aided design tyre structure provides excellent footprint profile and ensures superior comfort and even wear.
- Special tread compound guarantees less fuel consumption with lower rolling resistance.
- Stone ejectors in U-shape grooves minimize the stone holding and penetration.

SIZE	SERVICE INDEX				NOISE (dB)
445/45R19.5	160L	C	C	2	73
435/50R19.5	160J	D	C	2	73
385/55R22.5	160K(158L)	C	C	2	71
385/65R22.5	158L(160K)	C	C	2	71



- Short to middle distance journey with frequent braking, accelerating and turning
- Good paved road with many curves and unexpected rough conditions
- Challenging road conditions in winter with snow and ice



Highway

Country Road

City

Construction Site



# WSR+1

M+S



All Routes / Steer Axle

New steer tyre engineered with innovative WESTLAKE's latest technology for local and regional operations with rims of 17.5" and 19.5" .

- Computer-aided design 5-Rib tread provides precise handling.
- Tread sipes alongside tread grooves offer outstanding wet operation and even tread contact on road surfaces.
- Advanced tyre casing design promises good footprints and avoids uneven wear.

SIZE	SERVICE INDEX				NOISE (dB)
245/70R17.5	136/134M	D	D	2	72
205/75R17.5	124/122M(126/124G)	D	D	2	72
215/75R17.5	128/126M	D	D	2	72
225/75R17.5	129/127M	D	D	2	72
235/75R17.5	132/130M	D	D	2	72
245/70R19.5	136/134M	D	D	2	72
265/70R19.5	140/138M	D	D	2	72
285/70R19.5	146/144M	D	D	2	72



# WSR1

M+S



All Routes / Steer Axle

New steer tyre engineered with innovative WESTLAKE's latest technology for local and regional operations.

- Advanced 5-Rib tread provides even wear and remarkable handling.
- Specially designed tread pitches ensure low external noise.
- Tread sipes with straight tread grooves guarantee excellent water drainage and outstanding wet traction.
- Computer-aided design tyre casing promises good footprints to extend tyre life.

SIZE	SERVICE INDEX				NOISE (dB)
385/65R22.5	158L(160K)	C	C	2	71
315/70R22.5	156/150L	C	C	2	71
295/80R22.5	154/149M	D	C	2	71
315/80R22.5	154/151M(156/153L)	C	C	2	71





# WDR<sup>+</sup>1

M+S



All Routes / Drive Axle

New drive tyre designed for local and regional application with rims of 17.5" and 19.5".

- Deep tread depth and wider tread with robust tread blocks ensure outstanding traction on both dry and wet road surfaces.
- Excellent footprint design promises even wear and remarkable tyre life.

SIZE	SERVICE INDEX				NOISE (dB)
245/70R17.5	136/134M	E	D	2	74
205/75R17.5	124/122M	E	D	2	74
215/75R17.5	128/126M	E	D	2	74
225/75R17.5	129/127M	E	D	2	74
235/75R17.5	132/130M	E	D	2	74
245/70R19.5	136/134M	E	C	2	74
265/70R19.5	140/138M	E	C	2	74
285/70R19.5	146/144M	E	C	2	74



# WDR1

M+S



All Routes / Drive Axle

New drive tyre designed for local and regional application.

- Deep tread depth ensures longer tyre life.
- Directional tread pattern and robust tread blocks produce outstanding traction on both dry and wet road surfaces.
- Excellent footprint design promises even wear and remarkable tyre life.
- Special shoulder design with low-heating compound minimizes shoulder heel & toe wear.
- Applicable for snow roads with excellent traction capabilities.

SIZE	SERVICE INDEX				NOISE (dB)
315/70R22.5	154/150L(152/148M)	E	C	2	74
295/80R22.5	152/149M	E	C	2	74
315/80R22.5	156/153L(154/151M)	E	C	2	74





# WTR1

M+S



All Routes / Trailer Axle

New wide base trailer tyre with WESTLAKE's latest technology for local and regional application.

- 5-Rib tread and strong shoulder design provide excellent carrying capacity and longer tyre life.
- Computer-aided design tyre structure provides excellent footprint profile and ensures superior comfort and even wear.
- Special tread compound guarantees less fuel consumption with lower rolling resistance.
- Stone ejectors in U-shape grooves minimize the stone holding and penetration.

SIZE	SERVICE INDEX				NOISE (dB)
385/55R22.5	160K(158L)	C	C	2	71
385/65R22.5	158L(160K)	C	C	2	71
425/65R22.5	165K	C	C	2	73
445/65R22.5	169K	C	C	2	73



- Used both on and off road with expected aggressive, sharp-edge or muddy road condition
- Heavy loads and outstanding durability at slow speed and constant stopping
- Special protection against the damage caused by the road condition

Highway

Country Road

City

Construction Site





# WSM2

M+S



Construction Site / Steer Axle

2nd generation steer tyre with latest WESTLAKE technology for on & off operation.

- Wider tread width and solid shoulder offer improved tread stiffness, leading to an increased mileage and rolling resistance.
- Three zigzag grooves and multi-angular sipes Improve traction and braking performance.
- Polygonal block pattern provides outstanding traction and braking performance.

SIZE	SERVICE INDEX				NOISE (dB)
315/80R22.5	156/153K(154/151L)	D	C	2	74



# WDM2

M+S



Construction Site / Drive Axle

2nd generation drive tyre with latest WESTLAKE technology for on & off operation.

- Aggressive and high fill to void ratio blocks provides outstanding traction and longer mileage.
- The tie-bar between blocks guarantee outstanding straight driving performance and impact dispersion for the blocks.
- Stone ejector platforms prevent stones from lodging in grooves and drilling into belts.

SIZE	SERVICE INDEX				NOISE (dB)
13R22.5	156/151K	D	C	2	74
315/80R22.5	156/153K(154/151L)	D	C	2	74





# WDM1

M+S



Construction Site / Drive Axle

New strong casing tyre with latest WESTLAKE technology for on & off operation.

- Aggressive directional tread and open tread shoulder with robust tread blocks provide extra traction for On & Off application.
- Special tread compound promises better resistance to cuts and tearing.
- Enhanced sidewall structure minimizes unexpected damage from rough road condition.

SIZE	SERVICE INDEX				NOISE (dB)
13R22.5	156/151K	E	C	2	74
295/80R22.5	152/149K	E	B	2	74
315/80R22.5	156/153K(154/151L)	D	B	2	74



# WTM1

M+S



Construction Site / Trailer Axle & Steer Axle

New strong casing multi-service tyre for on & off operation.

- Aggressive tread pattern promises remarkable traction for On & Off application.
- Outstanding self-cleaning tread with stone ejector minimizes stone holding and penetration and ensures longer tyre life.
- Robust tread blocks and rugged sidewall casing allow heavy loads and resist casing penetration and damage.

SIZE	SERVICE INDEX				NOISE (dB)
385/65R22.5	160K(158L)	D	C	2	72





# WTX1

M+S

## MaX Load / Trailer Axle

New trailer tyres with advanced WESTLAKE technology for long haul and regional application.

- Strong Computer-aided design tyre casing guarantees outstanding capacity for heavy loads and highway.
- Special sipes alongside tread ribs help to minimize heating for high speed running with heavy loads.
- Special tread compound provides higher fuel efficiency with lower rolling resistance without sacrificing tyre mileage.



SIZE	SERVICE INDEX				NOISE (dB)
205/65R17.5	129/127K(132/132F)	D	C	2	71
215/75R17.5	135/133J	D	C	2	71
235/75R17.5	143/141J(144/144F)	D	C	2	71
245/70R17.5	143/141J(146/146F)	D	C	2	71
245/70R19.5	141/140J	C	C	2	71
265/70R19.5	143/141J	C	C	2	71
285/70R19.5	150/148J	C	C	2	72



- Applicable for heavy load trailers
- Short to long distance transport with reinforced tyre casing for heavy loads

Highway Country Road City Construction Site







- Frequent speed changes and turning
- Resistance to curb impact
- Excellent road grip and durable high mileage

Highway

Country Road

City

Construction Site



# WAU1



Urban Master / Steer Axle & Drive Axle

New all-position tyre with innovative WESTLAKE's technology for urban application.

- Optimised pattern design minimizes the rolling noise.
- Cool-running compound delivers low rolling resistance meaning more fuel efficiency.
- Applies kerfs to optimise tread stiffness, prevents irregular wear.
- Three zigzag grooves guarantee excellent traction on wet and dry road.
- Sidewall protector ribs help resist sidewall damage from turning, backing and braking when used in urban neighborhoods.

SIZE	SERVICE INDEX				NOISE (dB)
275/70R22.5	150/145J	D	C	2	71





# WSS1

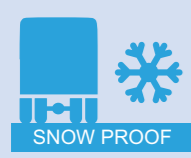


## Snow Proof / Steer Axle

New Steer tyre with WESTLAKE's latest technology for winter application.

- Wide and deep circumferential grooves enhances removal of snow and ice.
- Specific tread compound keeps rubber softness in low temperature with good performance.
- Wide tread with advanced block and sipe design provides extra traction for snow and ice road conditions.

SIZE	SERVICE INDEX				NOISE (dB)
315/70R22.5	156/150L(152/148M)	E	C	2	73
295/80R22.5	154/149L	E	C	2	73
315/80R22.5	154/151M(156/153L)	E	C	2	73



- Designed for winter use only
- Extraordinary traction on snow and ice road surface

Highway Country Road City Construction Site





# WDS1

M+S



Snow Proof / Drive Axle

New drive tyre with WESTLAKE's latest technology for winter application.

- Wide open shoulder delivers additional traction without compromising tread life.
- Specific tread compound keeps rubber softness in low temperature with good performance.
- Studable tread design provides extra traction for snow and ice road conditions.

SIZE	SERVICE INDEX				NOISE (dB)
315/70R22.5	154/150L(152/148M)	E	C	2	73
295/80R22.5	154/149L	E	C	2	73
315/80R22.5	156/153K(154/151L)	E	C	2	73



# WTS1

M+S



Snow Proof / Trailer Axle (Steer Axle Applicable)

New wide base trailer tyre with WESTLAKE's latest technology for winter application.

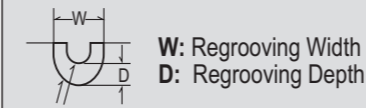
Also applicable for steer axle.

- New trailer winter tyre for severe weather conditions.
- Maximized snow and ice grip with special tread compound and CAD tread pattern.

SIZE	SERVICE INDEX				NOISE (dB)
385/55R22.5	160K(158L)	D	C	2	71
385/65R22.5	158L(160K)	E	C	2	71



# REGROOVING PROCEDURE



Regrooved pattern is shown in black.  
Recut depth listed is maximum value.  
Recut width listed has ±1 mm tolerance

## All Routes<sup>+</sup>

### WSA2<sup>LT</sup>

Pattern when new  
Pattern when 70% worn  
Pattern after regrooved

TYRE SIZE	DIMENSION OF REGROOVE	
	DEPTH (D)	WIDTH (W)
215/75 R 17.5	2.5mm	7.0mm
225/75 R 17.5	2.5mm	7.0mm
235/75 R 17.5	2.5mm	7.0mm
265/70 R 19.5	2.5mm	7.0mm

### WSA2

Pattern when new  
Pattern when 70% worn  
Pattern after regrooved

TYRE SIZE	DIMENSION OF REGROOVE	
	DEPTH (D)	WIDTH (W)
385/55 R 22.5	2.3mm	7.0mm
315/70 R 22.5	2.3mm	7.0mm
295/80 R 22.5	2.3mm	7.0mm
315/80 R 22.5	2.3mm	7.0mm

### WDA2<sup>LT</sup>

Pattern when new  
Pattern when 70% worn  
Pattern after regrooved

TYRE SIZE	DIMENSION OF REGROOVE	
	DEPTH (D)	WIDTH (W)
215/75 R 17.5	2.5mm	7.0mm
225/75 R 17.5	2.5mm	7.0mm
235/75 R 17.5	2.5mm	7.0mm
265/70 R 19.5	2.5mm	7.0mm

### WDA2

Pattern when new  
Pattern when 70% worn  
Pattern after regrooved

TYRE SIZE	DIMENSION OF REGROOVE	
	DEPTH (D)	WIDTH (W)
315/70 R 22.5	2.5mm	7.0mm
295/80 R 22.5	2.5mm	7.0mm
315/80 R 22.5	2.5mm	7.0mm

## Long Run

### WSL1

Pattern when new  
Pattern when 70% worn  
Pattern after regrooved

TYRE SIZE	DIMENSION OF REGROOVE	
	DEPTH (D)	WIDTH (W)
355/50 R 22.5	2.3mm	7.0mm
385/55 R 22.5	2.3mm	7.0mm
295/60 R 22.5	2.3mm	7.0mm
315/60 R 22.5	2.3mm	7.0mm

### WDL1

Pattern when new  
Pattern when 70% worn  
Pattern after regrooved

TYRE SIZE	DIMENSION OF REGROOVE	
	DEPTH (D)	WIDTH (W)
295/55 R 22.5	2.5mm	7.0mm
295/60 R 22.5	2.5mm	7.0mm
315/60 R 22.5	2.5mm	7.0mm

### WTL1

Pattern when new  
Pattern when 70% worn  
Pattern after regrooved

TYRE SIZE	DIMENSION OF REGROOVE	
	DEPTH (D)	WIDTH (W)
445/45 R 19.5	2.3mm	7.0mm
435/50 R 19.5	2.3mm	7.0mm
385/55 R 22.5	2.3mm	7.0mm
385/65 R 22.5	2.3mm	7.0mm

## All Routes

### WSR+1

Pattern when new  
Pattern when 70% worn  
Pattern after regrooved

TYRE SIZE	DIMENSION OF REGROOVE	
	DEPTH (D)	WIDTH (W)
245/70 R 17.5	2.5mm	7.0mm
205/75 R 17.5	2.5mm	7.0mm
215/75 R 17.5	2.5mm	7.0mm
225/75 R 17.5	2.5mm	7.0mm
235/75 R 17.5	2.5mm	7.0mm
245/70 R 19.5	2.5mm	7.0mm
265/70 R 19.5	2.5mm	7.0mm
285/70 R 19.5	2.5mm	7.0mm

### WSR1

Pattern when new  
Pattern when 70% worn  
Pattern after regrooved

TYRE SIZE	DIMENSION OF REGROOVE	
	DEPTH (D)	WIDTH (W)
385/65 R 22.5	2.3mm	7.0mm
315/70 R 22.5	2.3mm	7.0mm
295/80 R 22.5	2.3mm	7.0mm
315/80 R 22.5	2.3mm	7.0mm

### WDR+1

Pattern when new  
Pattern when 70% worn  
Pattern after regrooved

TYRE SIZE	DIMENSION OF REGROOVE	
	DEPTH (D)	WIDTH (W)
245/70 R 17.5	2.5mm	7.0mm
205/75 R 17.5	2.5mm	7.0mm
215/75 R 17.5	2.5mm	7.0mm
225/75 R 17.5	2.5mm	7.0mm
235/75 R 17.5	2.5mm	7.0mm
245/70 R 19.5	2.5mm	7.0mm
265/70 R 19.5	2.5mm	7.0mm
285/70 R 19.5	2.5mm	7.0mm

### WDR1

Pattern when new  
Pattern when 70% worn  
Pattern after regrooved

TYRE SIZE	DIMENSION OF REGROOVE	
	DEPTH (D)	WIDTH (W)
315/70 R 22.5	2.5mm	7.0mm
295/80 R 22.5	2.5mm	7.0mm
315/80 R 22.5	2.5mm	7.0mm

### WTR1

Pattern when new  
Pattern when 70% worn  
Pattern after regrooved

TYRE SIZE	DIMENSION OF REGROOVE	
	DEPTH (D)	WIDTH (W)
385/55 R 22.5	2.3mm	7.0mm
385/65 R 22.5	2.3mm	7.0mm
425/65 R 22.5	2.3mm	7.0mm
445/65 R 22.5	2.3mm	7.0mm

## MaX Load

### WTX1

Pattern when new  
Pattern when 70% worn  
Pattern after regrooved

TYRE SIZE	DIMENSION OF REGROOVE	
	DEPTH (D)	WIDTH (W)
205/65 R 17.5	2.5mm	7.0mm
245/70 R 17.5	2.5mm	7.0mm
215/75 R 17.5	2.5mm	7.0mm
235/75 R 17.5	2.5mm	7.0mm
245/70 R 19.5	2.5mm	7.0mm
265/70 R 19.5	2.5mm	7.0mm
285/70 R 19.5	2.5mm	7.0mm

## Urban Master

### WAU1

Pattern when new  
Pattern when 70% worn  
Pattern after regrooved

TYRE SIZE	DIMENSION OF REGROOVE	
	DEPTH (D)	WIDTH (W)
275/70 R 22.5	2.5mm	7.0mm

## Mixed Terrain

### WSM2

Pattern when new  
Pattern when 70% worn  
Pattern after regrooved

TYRE SIZE	DIMENSION OF REGROOVE	
	DEPTH (D)	WIDTH (W)
315/80 R 22.5	2.3mm	7.0mm

### WDM2

Pattern when new  
Pattern when 70% worn  
Pattern after regrooved

TYRE SIZE	DIMENSION OF REGROOVE	
	DEPTH (D)	WIDTH (W)
13 R 22.5	3.0mm	7.0mm
315/80 R 22.5	3.0mm	7.0mm

### WDM1

Pattern when new  
Pattern when 70% worn  
Pattern after regrooved

TYRE SIZE	DIMENSION OF REGROOVE	
	DEPTH (D)	WIDTH (W)
13 R 22.5	3.0mm	7.0mm
295/80 R 22.5	3.0mm	7.0mm
315/80 R 22.5	3.0mm	7.0mm

### WTM1

Pattern when new  
Pattern when 70% worn  
Pattern after regrooved

TYRE SIZE	DIMENSION OF REGROOVE	
	DEPTH (D)	WIDTH (W)
385/65 R 22.5	2.3mm	7.0mm

## All Routes

### WSS1

Pattern when new  
Pattern when 70% worn  
Pattern after regrooved

TYRE SIZE	DIMENSION OF REGROOVE	
	DEPTH (D)	WIDTH (W)
315/70 R 22.5	2.5mm	7.0mm
295/80 R 22.5	2.5mm	7.0mm
315/80 R 22.5	2.5mm	7.0mm

### WDS1

Pattern when new  
Pattern when 70% worn  
Pattern after regrooved

TYRE SIZE	DIMENSION OF REGROOVE	
	DEPTH (D)	WIDTH (W)
315/70 R 22.5	2.5mm	7.0mm
295/80 R 22.5	2.5mm	7.0mm
315/80 R 22.5	2.5mm	7.0mm

### WTS1

Pattern when new  
Pattern when 70% worn  
Pattern after regrooved

TYRE SIZE	DIMENSION OF REGROOVE	
	DEPTH (D)	WIDTH (W)
385/55 R 22.5	2.5mm	7.0mm
385/65 R 22.5	2.5mm	7.0mm







# SIZES & PATTERNS

SIZE	LR/PR	SERVICE INDEX	PATTERN	AXLE POSITION *	APPLICATION *	ROLLING RESISTANCE	WET GRIP	NOISE LEVEL	NOISE dB(A)	M+S	3PMSF
17.5*	205/65R17.5	J/18	129/127K(132/132F)	WTX1	T	X	D	C	2	71	✓
	245/70R17.5	H/16	136/134M	WSR+1	S	R	D	D	2	72	✓
	245/70R17.5	H/16	136/134M	WDR+1	D	R	E	D	2	74	✓
	245/70R17.5	J/18	143/141J(146/146F)	WTX1	T	X	D	C	2	71	✓
	205/75R17.5	G/14	124/122M(126/124G)	WSR+1	S	R	D	D	2	72	✓
	205/75R17.5	G/14	124/122M	WDR+1	D	R	E	D	2	74	✓
	215/75R17.5	G/14	128/126M	WSA2 <sup>LT</sup>	S	A	D	D	2	72	✓
	215/75R17.5	G/14	128/126M	WDA2 <sup>LT</sup>	D	A	D	D	2	72	✓
	215/75R17.5	G/14	128/126M	WSR+1	S	R	D	D	2	72	✓
	215/75R17.5	G/14	128/126M	WDR+1	D	R	E	D	2	74	✓
	215/75R17.5	H/16	135/133J	WTX1	T	X	D	C	2	71	✓
	225/75R17.5	G/14	129/127M	WSA2 <sup>LT</sup>	S	A	D	D	2	72	✓
	225/75R17.5	G/14	129/127M	WDA2 <sup>LT</sup>	D	A	D	D	2	72	✓
	225/75R17.5	G/14	129/127M	WSR+1	S	R	D	D	2	72	✓
	225/75R17.5	G/14	129/127M	WDR+1	D	R	E	D	2	74	✓
	235/75R17.5	G/14	132/130M	WSA2 <sup>LT</sup>	S	A	D	D	2	72	✓
	235/75R17.5	H/16	143/141J(144/144F)	WDA2 <sup>LT</sup>	D	A	D	D	2	72	✓
	235/75R17.5	G/14	132/130M	WSR+1	S	R	D	D	2	72	✓
	235/75R17.5	G/14	132/130M	WDR+1	D	R	E	D	2	74	✓
	235/75R17.5	H/16	143/141J(144/144F)	WTX1	T	X	D	C	2	71	✓
19.5*	445/45R19.5	L/20	160L	WTL1	T	L	C	C	2	73	✓
	435/50R19.5	L/20	160J	WTL1	T	L	D	C	2	73	✓
	245/70R19.5	H/16	136/134M	WSR+1	S	R	D	D	2	72	✓
	245/70R19.5	H/16	136/134M	WDR+1	D	R	E	C	2	74	✓
	245/70R19.5	J/18	141/140J	WTX1	T	X	C	C	2	71	✓
	265/70R19.5	H/16	140/138M	WSA2 <sup>LT</sup>	S	A	D	C	2	74	✓
	265/70R19.5	H/16	140/138M	WDA2 <sup>LT</sup>	D	A	E	C	2	74	✓
	265/70R19.5	H/16	140/138M	WSR+1	S	R	D	D	2	72	✓
	265/70R19.5	H/16	140/138M	WDR+1	D	R	E	C	2	74	✓
	265/70R19.5	J/18	143/141J	WTX1	T	X	C	C	2	71	✓
	285/70R19.5	H/16	146/144M	WSR+1	S	R	D	D	2	72	✓
	285/70R19.5	H/16	146/144M	WDR+1	D	R	E	C	2	74	✓
	285/70R19.5	J/18	150/148J	WTX1	T	X	C	C	2	72	✓
22.5*	13R22.5	J/18	156/151K	WDM2	D	M	D	C	2	74	✓
	13R22.5	J/18	156/151K	WDM1	D	M	E	C	2	74	✓
	355/50R22.5	L/20	156K(154L)	WSL1	S	L	D	C	2	73	✓
	295/55R22.5	H/16	147/145K	WDL1	D	L	D	C	2	74	✓
	385/55R22.5	L/20	160K(158L)	WSA2	S	A	C	B	2	73	✓
	385/55R22.5	J/18	158L(160K)	WSL1	S	L	D	C	2	73	✓
	385/55R22.5	L/20	160K(158L)	WTL1	T	L	C	C	2	71	✓
	385/55R22.5	L/20	160K(158L)	WTR1	T	R	C	C	2	71	✓
	385/55R22.5	J/18	158L	WTS1	T	S	D	C	2	71	✓
	295/60R22.5	J/18	150/147K(149/146L)	WSL1	S	L	D	C	2	73	✓
	295/60R22.5	J/18	150/147K(149/146L)	WDL1	D	L	D	C	2	74	✓
	315/60R22.5	L/20	154/150L	WSL1	S	L	D	C	2	73	✓
	315/60R22.5	L/20	154/150K(152/148L)	WDL1	D	L	D	C	2	74	✓
	385/65R22.5	J/18	158L(160K)	WTL1	T	L	C	C	2	71	✓
	385/65R22.5	J/18	158L(160K)	WSR1	S	R	C	C	2	71	✓
	385/65R22.5	J/18	158L(160K)	WTR1	T	R	C	C	2	71	✓
	385/65R22.5	L/20	160K(158L)	WDM1	D	M	D	C	2	72	✓
	385/65R22.5	L/20	160K	WTS1	T	S	E	C	2	71	✓
	425/65R22.5	L/20	165K	WTR1	T	R	C	C	2	73	✓
	445/65R22.5	L/20	169K	WTR1	T	R	C	C	2	73	✓
	275/70R22.5	H/16	150/145J	WAU1	A	U	D	C	2	71	✓
	315/70R22.5	L/20	156/150L	WSA2	S	A	D	B	2	73	✓
	315/70R22.5	L/20	156/150L	WDA2	D	A	D	C	2	74	✓
	315/70R22.5	L/20	156/150L	WSR1	S	R	C	C	2	71	✓
	315/70R22.5	L/20	154/150L(152/148M)	WDR1	D	R	E	C	2	74	✓
	315/70R22.5	L/20	156/150L(152/148M)	WSS1	S	S	E	C	2	73	✓
	315/70R22.5	L/20	154/150L(152/148M)	WDS1	D	S	E	C	2	73	✓
	295/80R22.5	J/18	154/149L	WSA2	S	A	D	C	2	74	✓
	295/80R22.5	J/18	154/149K	WDA2	D	A	E	C	2	74	✓
	295/80R22.5	J/18	154/149M	WSR1	S	R	D	C	2	71	✓
	295/80R22.5	J/18	152/149M	WDR1	D	R	E	C	2	74	✓
	295/80R22.5	J/18	152/149K	WDM1	D	M	E	B	2	74	✓
	295/80R22.5	J/18	154/149L	WSS1	S	S	E	C	2	73	✓
	295/80R22.5	J/18	154/149L	WDS1	D	S	E	C	2	73	✓
	315/80R22.5	J/18	156/153L(154/151M)	WSA2	S	A	D	B	2	73	✓
	315/80R22.5	J/18	156/153L(154/151M)	WDA2	D	A	D	C	2	74	✓
	315/80R22.5	J/18	154/151M(156/153L)	WSR1	S	R	C	C	2	71	✓
	315/80R22.5	J/18	156/153L(154/151M)	WDR1	D	R	E	C	2	74	✓
	315/80R22.5	J/18	156/153K(154/151L)	WSM2	S	M	D	C	2	74	✓
	315/80R22.5	J/18	156/153K(154/151L)	WDM2	D	M	D	C	2	74	✓
	315/80R22.5	J/18	156/153K(154/151L)	WDM1	D	M	D	B	2	74	✓
	315/80R22.5	J/18	154/151M(156/153L)	WSS1	S	S	E	C	2	73	✓
	315/80R22.5	J/18	156/153K(154/151L)	WDS1	D	S	E	C	2	73	✓

\* AXLE POSITION: S – Steer Axle; D – Drive Axle; T – Trailer Axle; A – All Axle  
 \* APPLICATION: A – All Routes+; L – Long Run; R – All Routes; M – Mixed Terrain; X – MaX Load; U – Urban Master; S – Snow Proof

# TECHNICAL INFORMATION

## Speed symbol

The speed symbol refers to the maximum speed capabilities of the tyre. It is only valid for tyres that are properly inflated and loaded within their assigned load index.

Speed symbol	Speed (km/h)
E	70
F	80
G	90
J	100
K	110
L	120
M	130

## Load index

The load index is the maximum load-carrying capacity of a tyre under a specific condition.

LI	kg	LI	kg	LI	kg	LI	kg
115	1215	129	1850	143	2725	157	4125
116	1250	130	1900	144	2800	158	4250
117	1285	131	1950	145	2900	159	4375
118	1320	132	2000	146	3000	160	4500
119	1360	133	2060	147	3075	161	4625
120	1400	134	2120	148	3150	162	4750
121	1450	135	2180	149	3250	163	4875
122	1500	136	2240	150	3350	164	5000
123	1550	137	2300	151	3450	165	5150
124	1600	138	2360	152	3550	166	5300
125	1650	139	2430	153	3650	167	5450
126	1700	140	2500	154	3750	168	5600
127	1750	141	2575	155	3875	169	5800
128	1800	142	2650	156	4000	170	6000



# LIMITED MANUFACTURER'S WARRANTY

## Who is Eligible for Warranty Coverage

You are eligible for the benefits of this warranty if you meet all the following criteria:

You are the owner or authorized agent of the owner of new WESTLAKE radial light truck or radial medium truck tyres

Your tyre(s) bears Department of Transportation (DOT) prescribed tyre identification numbers and are not branded "NA" (Not Adjustable) or buffed

Your WESTLAKE TBR tyres have been used only on the vehicle on which they were originally installed according to the vehicle manufacturers or

WESTLAKE's manufacturer recommendations

## Terms & Conditions

All radial truck tyre warranties are limited to the original purchaser and the original vehicle on which they were mounted and are not assignable to subsequent purchasers or vehicles. Original receipts must accompany all claims.

The cost of mounting, balancing and any other charges by the dealer in connection with the replacement of the tyre are required to be paid by the purchaser.

## What is Covered Under This Warranty and for How Long

All radial truck tyre warranties are limited to the original purchaser and the original vehicle on which they were mounted and are not assignable to subsequent purchasers or vehicles. Original receipts must accompany all claims.

The cost of mounting, balancing and any other charges by the dealer in connection with the replacement of the tyre are required to be paid by the purchaser.

## What is Covered Under This Warranty and for How Long

The warranty covers WESTLAKE radial light or medium truck tires manufactured by Zhongce Rubber Group Co., Ltd. after January/01/2019 with the country of origin of Thailand.

Zhongce Rubber Group Co., Ltd. (ZC RUBBER) warrants to the original purchaser that every new radial truck tyre bearing the brand of "WESTLAKE" will be free from defects in materials and workmanship.

This warranty is limited to FIVE (5) year from the original date of manufacture.

**2mm FREE REPLACEMENT WARRANTY:** Any tyre adjusted utilizing this limited free replacement warranty will be replaced at no charge if the tyre fails during the first 2mm of original tread depth, due to a defect in materials and/or workmanship.

This warranty is limited to the respective usable original tread depth, which is the original tread depth reduced by the Tread Wearing Index (TWI) depth.

This limited warranty is applicable only in European Union and any tyre used or equipped on a vehicle registered or operated outside European Union are not covered by this warranty.

## How to Calculate the Prorated Amount

The replacement price will be calculated by multiplying the current WESTLAKE "predetermined price for adjustment" or current advertised selling price at the adjustment location (whichever is lower) by the percentage of sable original tread that has been worn off at the time of adjustment. You pay for mounting, balancing, and amount equal to the full current Federal Excise Tax and any other applicable taxes and fees for the comparable new WESTLAKE replacement tyre.

## What is Not Covered

### Irregular wear or tyre damage due to:

- 1 Road Hazards (i.e. punctures, snags, cuts, impact breaks, etc.)
- 2 Wreck, collision, or fire
- 3 Improper inflation, overloading, high speed spinup, misapplication, misuse, negligence, racing, chain damage, or improper mounting or dismounting
- 4 Mechanical condition of the vehicle
- 5 Ride disturbance after the first 2mm treadwear or due to damaged wheels or any vehicle condition
- 6 Any tyre intentionally altered after leaving a factory producing the brand of "WESTLAKE" tyres to change its appearance (example: white inlay on a black tyre)
- 7 Tyres with weather cracking which were purchased more than five(5) years prior to presentation for adjustment. If you have no proof of purchase date, tyres manufactured five (5) or more years prior to presentation are not covered
- 8 Tyre branded or marked "Non-Adjustable (N/A) or "Blemished" (Blem), or buffed or previously adjusted
- 9 Willful abuse
- 10 Claims for ozone or weather cracks during original tread life on tyres more than 5 years from date of manufacture
- 11 Mechanical defects (such as brakes, shocks, worn steering and/or suspension parts, rim, etc.)

### Failure, damage or irregular wear due to:

- 1 Accident or vandalism, improper misalignment, wheel imbalance, faulty shocks or brakes
- 2 Misapplication of tyre, use of improper rim and/or improper inner tube
- 3 Alteration of the tyre or addition of alien material or transfer from one vehicle to another
- 4 TBR tyre failed due to faulty retreading or material
- 5 Cost of mounting and balancing service except as noted above
- 6 With the serial # buffed or cut.
- 7 With remaining tread in any groove equal or less than TWI depth
- 8 With a ride complaint that occurs after the first 2mm of tread wear
- 9 Loss of time or use, loss of use of vehicle, inconvenience, or any incidental or consequential damages
- 10 Material added to a tyre after leaving a factory producing the brand of "WESTLAKE" tyres: (example: tyre fillers, sealants, or balancing substances). If the added material is the cause of the tyre being removed from service, the tyre will not be adjusted

## End of Warranty

A tyre has delivered its full original tread life and the new tyre coverage of this warranty ends when the treadwear indicators become visible, or five(5) years from the date of original tyre manufacture or new tyre purchase date. (Without proof of purchase, date of manufacture will be used to determine age.)

## To Obtain an Adjustment

### In order to be eligible for the limited warranty service, the purchaser must:

- 1 Present the defective tyre to an authorized dealer from whom the original purchase was made
- 2 Present proof of purchase to the satisfaction of the dealer
- 3 Complete and sign a warranty claim form which is available at any authorized dealer
- 4 Retain and present the warranty card along with proof of date and place of purchase in order to make a claim. The authorized dealers name and address from whom the tyres were purchased must be also included on the warranty form
- 5 At the time of purchase the tyre(s) must be properly installed with proper air pressure and the wheels balanced
- 6 You must pay for taxes, fees or any additional services you order at the time of adjustment

## Warning

### Serious injury or property damage may result from:

- 1 **TYRE FAILURE DUE TO UNDERINFLATION/OVERLOADING.** Follow the owner's manual or tyre placard in vehicle
- 2 **TYRE FAILURE DUE TO EXCESSIVE HIGH SPEED.** Follow the owner's manual or tyre placard in vehicle
- 3 **EXPLOSION OF TYRE/RIM ASSEMBLY DUE TO IMPROPER MOUNTING.** Only specially trained persons should mount tyres
- 4 **FAILURE TO MOUNT RADIAL TYRES ON APPROVED RIMS**
- 5 **FAILURE TO DEFLATE SINGLE OR DUAL ASSEMBLIES COMPLETELY BEFORE DISMOUNTING**
- 6 **TYRE SPINNING.** On slippery surfaces such as snow, mud, ice, etc., do not spin tyres in excess of 55 kpm, as indicated on the speedometer. Personal injury and severe damage may result from excessive wheel spinning, including tyre disintegration or axle failure

